

# Flûte

## Finale. Capriccio.

**Allegro assai.**

Flûte

1 8

*p* *f*

**Lento.**

*p*

**Allegro assai.**

33 39 45 50 55 59 64 69

*f* *p* *p*

76

83

90

98

105

112

119

126

132

139

151

157

163

*p*

*p*

*f*

*p*

*f*

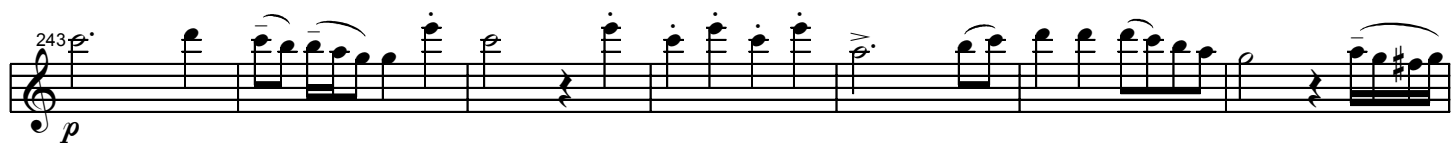
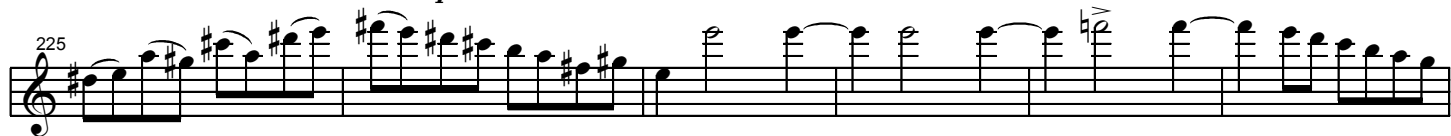
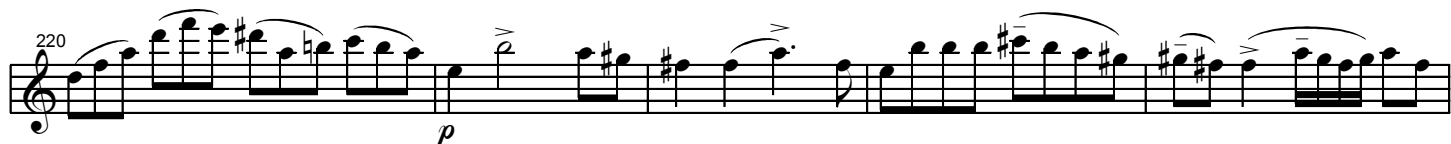
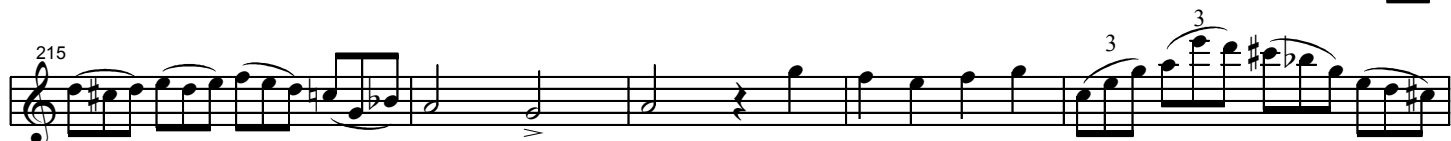
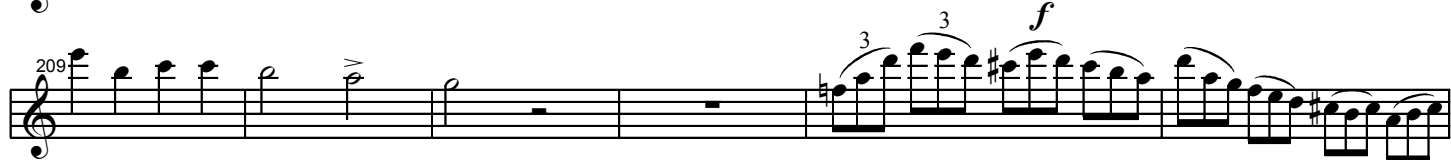
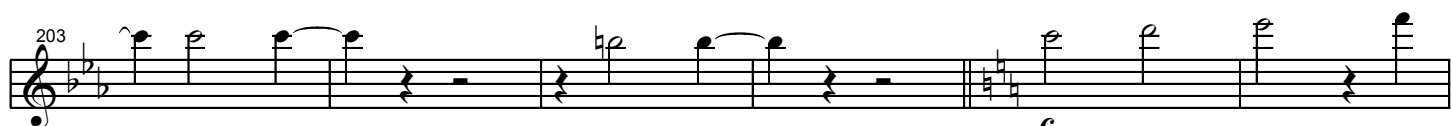
**Lento.**

**Allegro assai.**

2

7

2



250

257

264

270

277

283

290

296

301

308

315

321

328

*p*

*f*

335

341

347

353

*ff*

Fine

The image shows a musical score for four staves. The first staff begins at measure 335 and contains a series of eighth and sixteenth notes, some with accents and slurs. It concludes with a forte (*ff*) dynamic marking. The second staff starts at measure 341 and continues the melodic line with similar rhythmic patterns. The third staff begins at measure 347 and features more complex phrasing with slurs and accents. The fourth staff starts at measure 353 and consists of a few final notes before a double bar line and the word "Fine".